

CLICK FOR PRODUCT DEMONSTRATION

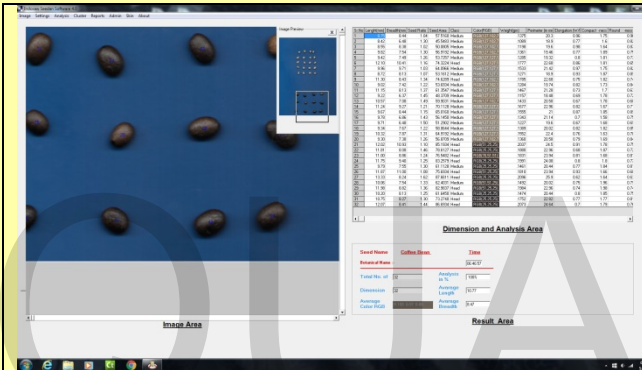


COFFEE LABORATORY

BEAN AND GRIND ANALYSIS SOFTWARE

Provides size, shape, density, and color information, for green and roasted coffee beans

QUOTATION / PRICING



After a scan, the coffee beans will be displayed on the left side of the screen.

Selecting the data tab, will populate the right side of the screen with average size, shape, and color values.

Report Summary

Date : Tuesday, May 10, 2016

Vendor Name : GREEN AND ROASTED BEANS

Address :

City :

Goodawn No.:

Receipt No :

Stack No :

Average Length :10.77

Average Width :8.47

Average Weight :0.098

Average Ratio :0.67

Average Area

Total Grain :32

Lot Number :

Sale Order Number :

Moisture %age :0

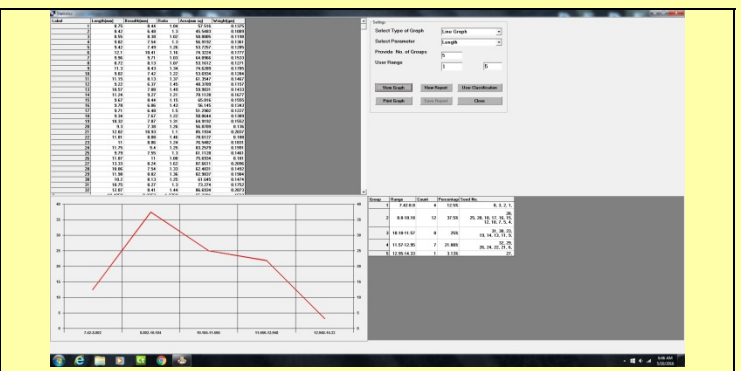
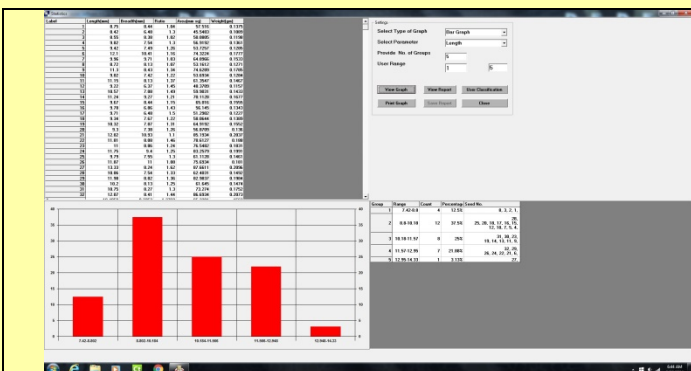
Commodity Name: 17

Botanical Name :-

Color	Weight	Weight in	No. of Seed
RGB(127,102,76)	0.6618	13 %	5
RGB(127,102,102)	0.4267	9 %	3
RGB(127,127,102)	1.57	31 %	11
RGB(127,127,127)	0.1533	3 %	1
RGB(51,25,25)	0.5831	12 %	3
RGB(25,25,25)	1.2727	25 %	7
RGB(76,51,51)	0.1831	4 %	1
RGB(51,51,25)	0.1492	3 %	1
Total Weight :	4.9999		

Report By : Administrator

Color information is presented in RGB Format.



SPECIFICATIONS

Image Analysis : Coffee Analyzer Software can calculate the morphological parameters of coffee beans from a flatbed scanner image.

Parameters :

It calculates the Length(L), breadth (B) L/B Ratio, Area and shape parameters like elongation and compactness of individual beans.

Classification parameters of coffee beans can be stored in a database index.

Statistical Analysis : Graphical statistical analysis and text output is also simultaneously generated.

Software Protection : Software is protected with USB Dongle.

Accuracy : Extremely accurate. The Average bean length is accurate to ± 0.02 mm.

Zoom facility : Individual Beans can be manually reviewed with Zoom facility.

Color Analysis : Advanced color analysis features to classify beans and grinds

MINIMUM RECOMMENDED HARDWARE CONFIGURATION

A dedicated image acquisition system.

Minimum requirement is a flat bed scanner@ 200 dpi

A dedicated computing system. Minimum requirement is: -

Operating system : Window 7/ Window8

CPU : Intel/AMD processor or equivalent.

RAM : 1GB (at least 1GB free)