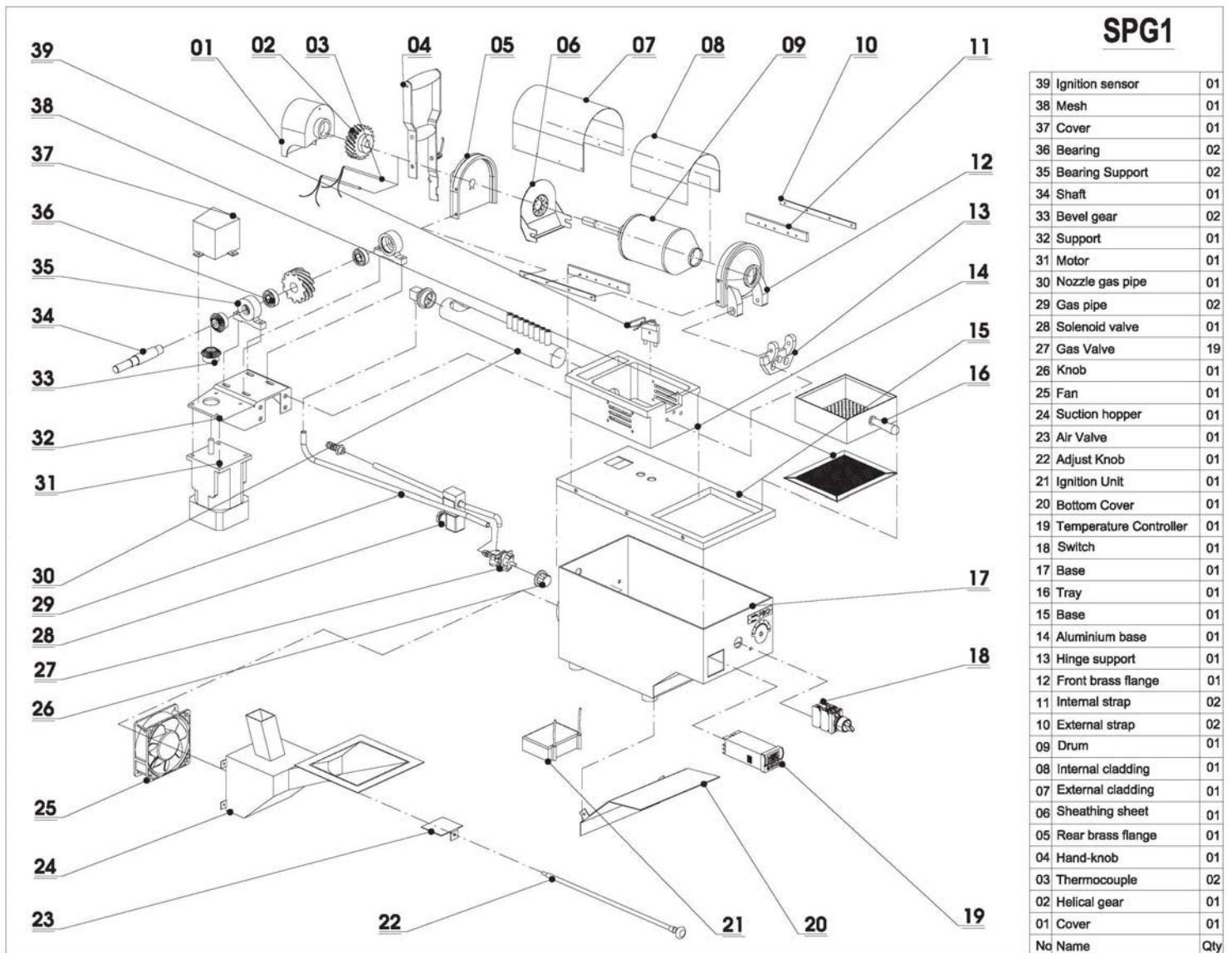


# Coffee PRO<sup>®</sup> Direct

## Technical Manual

### SPG1

#### 1. Components



## 2. Technical Specifications

- Capacity 100g/ batch /drum
- Roasting time 05 –15 minutes per batch
- Velocity of roasting drum 60 RPM
- Power installed Power source 50-60Hz/220-240V  
Single phase
  - + Motor: 25 W
  - + Suction fan: 10 W
- Dimensions (mm) L x W x H: 560 x 250 x 560
- Net Weight 32 kg

