

Get Precision

"In the landscape of extinction, precision is next to godliness."
Samuel Beckett

Introducing ColorTrack

The ColorTrack R100 Laser Color Analyzer represents the latest in technology and a new standard for color analysis delivering unparalleled precision. The state of the art patented laser takes over ten thousand unique moving scans per second over the entire sample as compared to just a few static illuminations executed by comparable devices. This dynamic sampling creates incredibly accurate readings and can even eliminate anomalies that causes other analyzers to fail. Results reflect an analysis of the full sample versus just a few illuminated points. Unlike other color analysis devices, the ColorTrack is a true reflectometer and employs the historically illusive 785 nm technology. By analyzing pure reflectivity, or shade, it can be used on virtually any substance with extreme precision and differentiation. The list of applications is endless whether it's coffee, motor oil or french fries, using the same device. There's also no special calibration and no hardware changes making it the perfect tool for labs analyzing varied samples of different frequencies. Whether analyzing coffee beans or french fries, ColorTrack is virtually foolproof. Unaffected by surface it can read accurately regardless of "peaks and valleys" or non-uniform surfaces. For example, you can read both whole bean and ground coffee with

the same precision and accuracy. This also eliminates the need for time consuming sample preparation and surface leveling as well as reducing the possibility of human error or inconsistent preparation methods. ColorTrack is easy to use and requires virtually no maintenance, setup or any of the extensive calibrations required by most devices. Simply plug it in and push the start button. The rest is automatic. Even the software will automatically update itself. Just start the program while connected to the Internet and any updates are seamlessly downloaded and installed before each session. ColorTrack doesn't just provide values either. The powerful ColorTrack software displays graphical representations of each test along with an extensive list of test data including minimums, maximums, standard deviation and exactly how many readings were recorded at each color value. And as to precision, you can set the device to record to the ten thousandth of a point! You can even save all of the test data along with notes and other information in the comprehensive database with a simple mouse click.



Distributed by

COFFEE LABORATORY

866-244-1578

International Inquiries: 804-435-5522
Coffeelabequipment.com

ColorTrack™

Get The Data

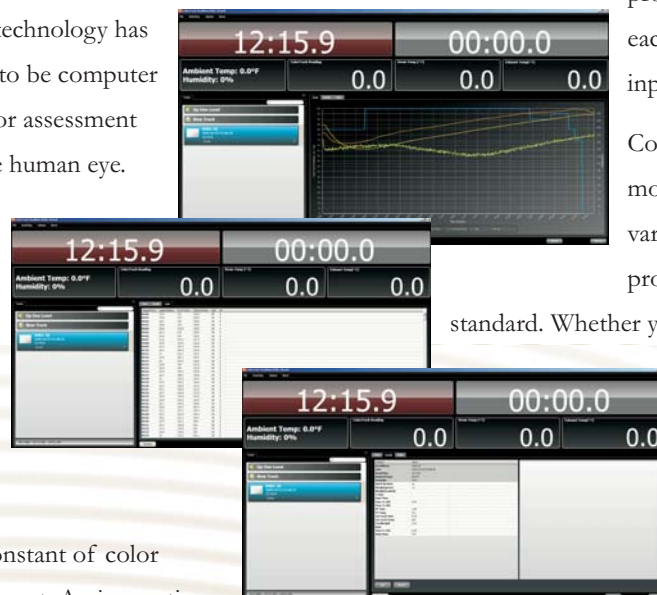
"Transform data into information, and information into insight"

Carly Fiorina - Former CEO Hewlett Packard

Fresh Roast Systems, Inc. proudly introduces coffee *insight*. The ColorTrack R/T Data Logger and Laser System represents the most significant advance in coffee roasting technology since computer profiling. Roastmasters monitor their roasts through elements of time, temperature and color. While technology has allowed time and temperature to be computer monitored and controlled, color assessment is still totally dependent on the human eye. With the ever changing characteristics of crops, environment and subtle changes in roast development, inconsistency and loss have been unavoidable, until now.

ColorTrack lets you add the constant of color development or roast development. An innovative new technology, a patented laser system combined with start of the art logging software designed specifically for roasting, offers unparalleled precision and detailed data, before, during and after your roast. The end result is a tool that enables you to reach an unmatched level of quality and consistency and one that offers a new level of insight into developing your coffees. ColorTrack R/T uses the patented laser system to analyze color

development throughout the roasting process in real time. While also recording all of the standard elements such as time and temperature. With ColorTrack you can now correlate actual color development as it relates to your roast profiles right down to the second of each and every roast with NO manual input or labor either. It's all automatic. ColorTrack closes the gap on even the most subtle differences in roasting variables making your finished product the best match to your standard. Whether you're roasting in Tokyo or Topeka,



"ColorTrack rocks. It's the most important tool in our roasterie."
Andy Newbom - Barefoot Coffee Roasters

"The precision is remarkable. It is an empowering tool for any roast master and roasting facility." Willem Boot - Boot Coffee Consulting

"It's truly breakthrough technology. The potential for error is basically eliminated and our consistency and quality is at the max." Alfred Holszheu - El Rancho Coffee



Distributed by

COFFEE LABORATORY

866-244-1578

International Inquiries: 804-435-5522
Coffeelabequipment.com

ColorTrack™ R/T