

Roast Precise

The **ColorTrack R100** represents the new gold standard for coffee color and roast analysis. Using a state-of-the-art patented laser employing 780 nm wavelength technology designed specifically for coffee, **ColorTrack** takes up to forty thousand scans per second moving over the entire sample. This dynamic sampling creates incredibly accurate readings and consistency.

ColorTrack lets you get your roasting specs, QA and QC programs precise, fast and easily. There's no warm up, no calibration, no lamps to maintain and no optical surfaces to worry about. Sample preparation? You can read accurately regardless of non-uniform surfaces so there is no special preparation. Scan both whole bean and ground coffee with total precision and accuracy.

ColorTrack doesn't just provide a single value either. The powerful software displays graphical representations of each scan along with analytics including averages, modes, minimums, maximums, and standard deviation. All data can be saved along with notes. Recall it any time. You can import, export, compare scans and much more!

CLICK FOR DEMONSTRATION



ColorTrack is also the only color analyzer that is fully integrated into the award winning **Cropster** software. When connected, all your production roast data is downloaded and you can select a specific production roast based on your scan.

ColorTrack is the most consistent and repeatable color analyzer you can find. Every **ColorTrack** will always read alike. Roasters with multiple locations can confidently scan with precision and accuracy from location to location, device to device.

And new for 2016, is **ColorTrack Blu**, making **ColorTrack** a wireless **Bluetooth** system for **iPhone** and **iPad** complete with a cloud virtual laboratory and custom dashboard to work with your analytics stand alone or with **Cropster**. Get started on perfecting your quality assurance and consistency control programs today. Call and get a **ColorTrack** today!

- Up to 40,000 True Laser Scans Per Second
 - Specialized For Coffee At 780 nm
 - Full Graphical Software Suite With Cloud
- No Calibration Required. No Lamp Maintenance
 - Auto Adjustment For Heat And Humidity
- Reads Whole Bean And Ground With Equal Precision
- Accuracy, Precision And Repeatability To .01 Point
- Scale Conversion For All Existing Devices (e.g., Agtron)
 - Full Lifetime Laser Diode Warranty
 - Windows And Mac Compatible
 - Cropster Equipped And Enabled
- NEW! iOS Bluetooth Wireless For iPhone/iPad

cropster
EQUIPPED



Cropster/ColorTrack
Lab Bench Integration

COLORTRACKTM
R-100



ColorTrack
R-100B Color
Analyzer



ColorTrack
Genesis Handheld
Analyzer TEL (804) 435-5522

COLORTRACK

We'll help you deliver a perfectly Consistent roast, every time.

WE HELP SOME OF THE
BEST ROASTERS IN THE WORLD
MAINTAIN CONSISTENCY



George Howell
COFFEE



BLUE BOTTLE
COFFEE



ColorTrack laser analysis provides you with the most consistent and repeatable color analysis available, setting a new and unparalleled standard of perfection.

Unbeatable accuracy

Accuracy that's unparalleled: Using innovative laser technology, ColorTrack offers precision and repeatability of color to .01 points, with automatic adjustment for constantly changing ambient air temperature and humidity. Color analysis tools that use old-tech incandescent or LED bulbs need constant recalibration and have up to +/- 4 point error rate.

Easy integration

Plug-and-play: ColorTrack integrates with Cropster and Connects via Bluetooth for iOS devices, Mac and Windows Software, or your custom dashboard.



Efficiencies in multiple areas

Mitigates waste: Accuracy of readings and automatic adjustments mean less waste, saving you time, money and effort. Customers typically reduce waste to less than 1%, versus the industry average of 2-6%.

Proven success

Stress-tested by roasters large and small: Clients include Dunkin' Donuts, Barefoot Coffee Roasters, Alexandru Niculae, George Howell Coffees, Boot Coffee Consulting and Tim Wendelboe Coffee.

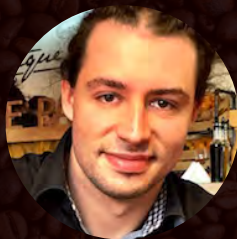
WHAT THE EXPERTS SAY ABOUT COLORTRACK



"I know coffee, but perfection requires tools. ColorTrack and Cropster provide those and are unmatched by anything else in the coffee industry. They allow me to plan perfection not hope for it."

George Howell

SCAA lifetime Achievement Award
SCAE Better Coffee World Award
Founder, Coffee Connection
President & CEO,
George Howell Coffee



"I spend endless hours seeking the perfect roast. It requires passion but it also requires the right color analysis tools. ColorTrack provides the technologies and tools I need and rely on. They are simply unmatched in the industry. Seek perfection. Get ColorTrack."

Alexandru Niculae

World Coffee Roasting Champion
2016



"Our mission is to be the best among coffee roasters in the world. ColorTrack and Cropster are the best tools I have come across and are instrumental in helping me understand roasting better and keep our roast quality as consistent as possible."

Tim Wendelboe

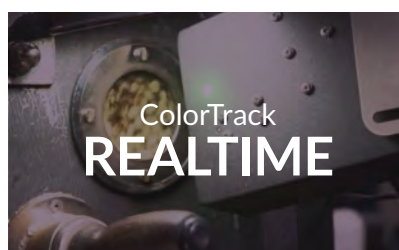
World Barista Champion World
Renowned Coffee Roaster
Owner, Tim Wendelboe Coffee

DISCOVER HOW WE CAN HELP YOU DELIVER A PERFECTLY CONSISTENT ROAST, EVERY TIME.

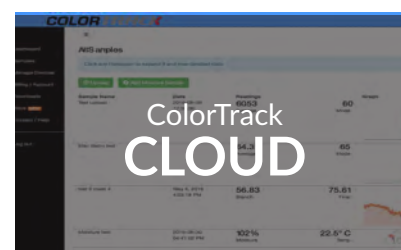
The RealTime laser provides up to 40k laser scans per second so you can get ahead of any potential problems with a roast, as it's developing.



The original ColorTrack brings accuracy and reliability to your coffee lab or quality control line.
\$6,895



Monitor the color development of a roast as it's roasting. With instant feedback, you can never over-roast or under-roast again!
\$99.95 /Month



Every sample you take is automatically sent to the cloud, where you can store, analyze, organize and share them.
\$9.95 /Month

COLORTRACK

QUOTE REQUEST ✓

BUY ONLINE ✓