

# PX-MFC 90 D

**COFFEE LABORATORY**

*Hammer mill &  
Blade mill*

*Micro Milling  
Technology in the  
Laboratory*

CLICK FOR PRODUCT VIDEO



**DRY MILLING**

**HAMMER GRINDING**

**BLADE GRINDING**



# KINEMATICA.CH

Dispensing and Mixing Technology

Coffee Laboratory White Stone Va TEL (804) 435-5522

North America South America Inquiries

[www.coffeelabequipment.com](http://www.coffeelabequipment.com)

[www.kinematica.ch](http://www.kinematica.ch)

KINEMATICA is the leading manufacturer of homogenizing, mixing and milling equipment based on our technology of rotor/stator dispersing principles.

With the new designed POLYMIX® System PX-MFC 90 D KINEMATICA presents now the successor of the famous POLYTRON® System PX-MFC - Culatti Micro Hammer Mill. The new PX-MFC 90 D is suitable for all dry milling applications in the lab and is designed with many new features: a more powerful motor, an integrated frequency inverter with LED-display, a new designed milling chamber with exchangeable grinding attachments, a new base frame with integrated handle and much more.

**Special features of the PX-MFC 90 D:**

- 500% more power (1000 W, 3-phase motor) than former model PX-MFC
- Speeds up to 6'000 rpm
- Low noise level due to brushless 3-phase AC motor
- Integrated speed control with LED-display for speed indication and status messages
- Integrated overheating, overload and blocking protection
- Safety switch for automatic-Off
- Energy saving through automatic Standby-mode
- Milling chamber with attached funnel and rotary slide for product inlet dosage; intercepting tubes and NS29 vessels can be attached to milling chamber outlet
- Milling chamber can be equipped with hammer grinding or blade grinding attachment
- Milling chamber can be equipped with sieves in different mesh sizes from 0.2 up to 6 mm
- Milling chamber parts in contact with the product made from stainless steel hardened
- Base frame made from anodised aluminium with integrated handle

**Technische Daten**



**CLICK FOR QUOTATIONS & PRICING**

Motor Type, Power	3-phase AC Motor up to 1000 W (input) / up to 600 W (output)
Working volume (funnel)	approx. 300 ml (volume of the funnel)
Display	LED
Supply Voltage	230V / 50 Hz or 100-120V / 60 Hz
Speed range	50 - 6'000 rpm
Noise emission (drive only)	< 70 dB(A) bei 6'000 rpm (w/o load)
Ambient condition	0 - 40°C, max. 95% rel. humidity
Protection class	IP 20
Dimensions / Weight (drive)	251 x 325 x 480 mm (LxBxH) / ca. 12 kg
Standards	EMC according IEC/EN 61000-6-2 / EN 61000-6-3 Safety according IEC/EN 61010-2-51

**Milling chamber**



Milling chamber with Safety switch, funnel, lid, rotary slide for product dosage and NS29 adapter for intercepting tubes

**Front-Panel**



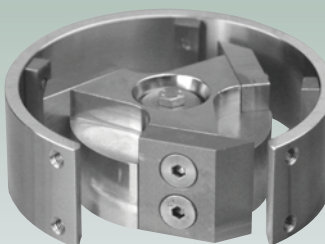
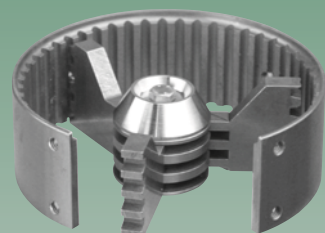
Front panel with Safety On/Off switch, control knob and LED display for speed indication and status messages

Drive Units



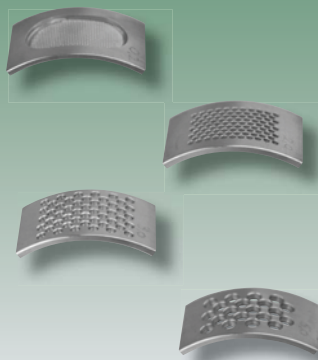
Order Code	Description	
35010020	PX-MFC 90 D / H, 230V (CH)	Drive unit with milling chamber, <b>Hammer grinding attachment</b> , sieve 2.0 mm, tool set, wooden stand with 12 intercepting tubes
35010021	PX-MFC 90 D / H, 230V (EU)	
35010022	PX-MFC 90 D / H, 230V (UK)	
35010023	PX-MFC 90 D / H, 100-120V	
35010030	PX-MFC 90 D / S, 230V (CH)	Drive unit with milling chamber, <b>Blade grinding attachment</b> , sieve 2.0 mm, tool set. dismantling tool, wooden stand with 12 intercepting tubes
35010031	PX-MFC 90 D / S, 230V (EU)	
35010032	PX-MFC 90 D / S, 230V (UK)	
35010033	PX-MFC 90 D / S, 100-120V	

Grinding Attachments



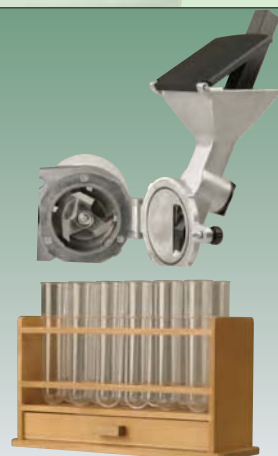
Order Code	Description	
35031001	Hammer grinding attachment	<p><b>Description</b> Consisting of rotor with 3 impact hammers and stator with place for one exchangeable sieve</p> <p><b>Applications</b> The impact grinding mill attachment is designed for processing dried, non-fatty, hard and brittle products such as: Cereals, corn, malt, pectin, raw &amp; roasted coffee, beans, oats, nutshells, bones, fins (fish), gravel, stone, amber, mortar, etc.</p>
35031002	Blade grinding attachment	<p><b>Description</b> Consisting of rotor with 3 attached blades and stator with place for one exchangeable sieve</p> <p><b>Applications</b> The blade grinding mill attachment is designed for processing dried, non-fatty, stringy and ductile products such as: Wood, bark, roots, leaves, straw, cork, dried fruits, dried degreased meat, adenoids, fish, feathers, leather, dermis, wool, cotton, leashes, paper, coal, turf, dried resins, synthetic materials, fibre glass, plastic pellets, different textiles, felt, etc.</p>

Sieves



Order Code	Description	Mesh size / hole diameter
35095002	Sieve 0.2 mm	0.2 mm
35095005	Sieve 0.5 mm	0.5 mm
35095008	Sieve 0.8 mm	0.8 mm
35095010	Sieve 1.0 mm	1.0 mm
35095015	Sieve 1.5 mm	1.5 mm
35095020	Sieve 2.0 mm	2.0 mm
35095030	Sieve 3.0 mm	3.0 mm
35095040	Sieve 4.0 mm	4.0 mm
35095050	Sieve 5.0 mm	5.0 mm
35095060	Sieve 6.0 mm	6.0 mm

Further Accessories



Order Code	Description	
35080001	Stodger	Well suited stodger for safe and easy stodging till the entrance of the milling chamber (shown with blade grinding attachment)
35080003	Wooden stand	Practical wooden stand for 12 intercepting tubes and box for toolset
35080004	12 intercepting tubes	Suitable for the wooden stand
35080005	Spare tool set	Spare set; one tool set will already be delivered with the drive unit
35080006	Spare dismantling tool	Spare tool for blade grinding attachment; one tool will always be delivered with a blade grinding attachment