

HygroLab C1

Laboratory application

ROTRONIC provides a high-end laboratory device – the HygroLab C1 – for water activity measurements with up to four probes. Connect station probes and insertion probes for measuring water activity in cheese, meat, tobacco, building materials, animal feed, pharmaceuticals products and much more.

Validated software

Easy-to-use and intuitive, the laboratory grade indicator can be used by anyone. HW4 running on a PC provides remote monitoring with charting and data recording functions.



Features

- 4 input channels for HC2 station probes or HC2 insertion probes can be connected for measurement of water activity, relative humidity and temperature
- Aw Quick function for fast measurement results (typically 4-5 minutes)
- Audible alarm to indicate completed measurement
- Saves up to 2,000 data records with %RH, °C/°F, date and time

QUOTATIONS & PRICING

| Order code | HygroLab C1 |
|----------------------|--|
| Probe connections | 4 x HC2 station probe or HC2 insertion probe |
| Parameters shown | Aw, % RH, °C, °F |
| Aw Quick function | Integrated and via HW4 software HW4-P-QUICK-Vx (in shipment included) |
| Calculations | All psychrometric calculations available or user defined calculations |
| Probe adjustment | Single or multiple point for relative humidity & temperature One or two point temperature |
| Memory | 4 x 500 Aw values (2,000 Aw values) |
| Measurement interval | 1 s |
| Start-up time | 3 s |
| Power supply | 8...16 VDC with AC adapter |
| Interfaces | Ethernet and USB |
| HW4 compatible | V3.1 and higher |
| Range of application | -10...60 °C (14...140 °F) / 0...1 Aw / 0...100 %RH |
| LCD | 3-line alphanumeric with trend indicators |
| Clock | Real time clock provides a time stamp for every measurement |
| Current consumption | Max. 120 mA (12 VDC, backlight ON, 4 probes connected, Ethernet) |
| IP protection class | IP21 |
| CE / EMC conform | EMC 2008/108/EG |
| FDA / GAMP | FDA 21 CFR part 11 / GAMP5 |
| Dimensions /Weight | 225 x 170 x 70 mm / 1100 g |
| Material | Aluminum, ABS-757 |



Aw station probes

The station probes are designed for using with HygroLab C1 or HygroPalm HP23-AW-A. Measurement of water activity with this digital probe is precise, fast and easy. The probe can be calibrated with the HygroLab C1 or via the HW4 software. Minimized internal volume of the sensor chamber ensures fast equilibrium with all products, and an all metal construction ensures good temperature stability during measurements, with stainless steel used on all critical surfaces. Sample holders, sample containers and a sealing mechanism are detailed in accessories.



HC2-AW

QUOTATIONS & PRICING

| Order code | HC2-AW |
|----------------------------------|--|
| Probe type | Measurement probe with UART interface |
| Connection | Via UART, 1 m cable |
| For use with | HygroLab C1, HP23-AW-A |
| Accuracy at 23 °C ±5 K (73.4 °F) | ±0.008 Aw / ±0.8 %RH / ±0.1 K |
| Temperature dependence | 0.001 K/K, 0.0002 aw/K |
| Sensor | HYGROMER® WA-1 / Pt-100, 1/3 DIN Class B |
| Calculations | Dew or frost point |
| Long term stability | <1 %RH / year |
| Power supply | Via display instruments |
| Range of application | -40...85 °C (-40...185 °F) / 0...100 %RH |
| Filter type | Wire mesh filter with 20...25 µm pore size |
| Response time τ63 | <20 s |
| Measurement interval | 1 s |
| Start-up time | 1.5 s |
| IP protection | IP20 |
| CE / EMC conformity | EMC 2008/108/EG |
| FDA / GAMP | FDA 21 CFR part 11 / GAMP5 |
| Dimensions / Weight | Ø68 x 60 mm / 600 g |
| Material | Stainless steel, aluminum |

Typical accessories



PS-40



WP-40



AW-KHS

Typical accessories

Sample holders: WP-14-S, WP-40, WP-40TH
 Disposable sample container: PS-14 (14 mm deep), PS-40 (40 mm deep)

Note: Order sample containers separately.
 Sample holders can also be used as calibration device.



HygroPalm23-AW-A

Field application

The HygroPalm HP23-AW-A offers the perfect solution for on-site water activity measurements to confirm product stability and indicate shelf life. The HP23-AW-A is suitable as a mobile laboratory unit. Equal to the HygroLab C1 the HP23-AW-A is perfect as a portable analyzer with two probe inputs for any suitable HC2 probe. The HP23-AW-A can also be used in conjunction with HW4-P-QUICK-Vx.

Portable and convenient

Handheld instrument specially configured to suit the water activity user. It includes many of the advanced features of the HygroLab C1, but in a convenient portable configuration.

Features

- 2 input channels for HC2 station probes or HC2 insertion probes can be connected for measurement of water activity, relative humidity and temperature
- Aw Quick function for fast measurement results (typically 4-5 minutes)
- Audible alarm to indicate completed measurement
- Saves up to 10,000 data records with %RH, °C/°F, date and time
- Battery charging function

QUOTATIONS & PRICING

| Order code | HP23-AW-A |
|----------------------|---|
| Probe connections | 2 HygroClip2 or analog input 0...3.2 VDC (power supply for analog probe: 5 VDC) |
| Parameters shown | Aw, % RH, °C, °F |
| Aw Quick function | Integrated or via optional HW4 software HW4-P-QUICK-Vx |
| Calculations | All psychrometric calculations available |
| Probe adjustment | Single or multiple point for relative humidity & temperature one or two point temperature |
| Memory | Capture mode: 8 x 250 values Logging mode: 10,000 values |
| Measurement interval | 1 s, 10 s, 1 min, 10 min |
| Start-up time | 3 s |
| Power supply | 9 V battery or USB/ mains adapter via mini USB |
| Interfaces | Mini USB |
| HW4 compatible | Yes, for all HW4 versions |
| Range of application | -10...60 °C (14...140 °F) / 0...1 Aw / 0...100 %RH |
| LCD | 3-line alphanumeric with trend indicators |
| Clock | Real time clock provides a time stamp for every measurement |
| Current consumption | Max. 20 mA (backlight ON) |
| IP protection class | IP30 |
| CE / EMC conform | EMC 2008/108/EG |
| FDA / GAMP | FDA 21 CFR part 11 / GAMP5 |
| Dimensions /Weight | 188 x 72 x 30mm / 200 g |
| Material | ABS |

Compatible products

Water activity probe: HC2-AW
 Insertion probe: HC2-P05, HC2-HP28, HC2-HP50

QAQC LAB / COFFEE LABORATORY WHITE STONE VA 22578
 TEL (804) 318-3686 FAX (703) 991-7133

Aw Insertion probes

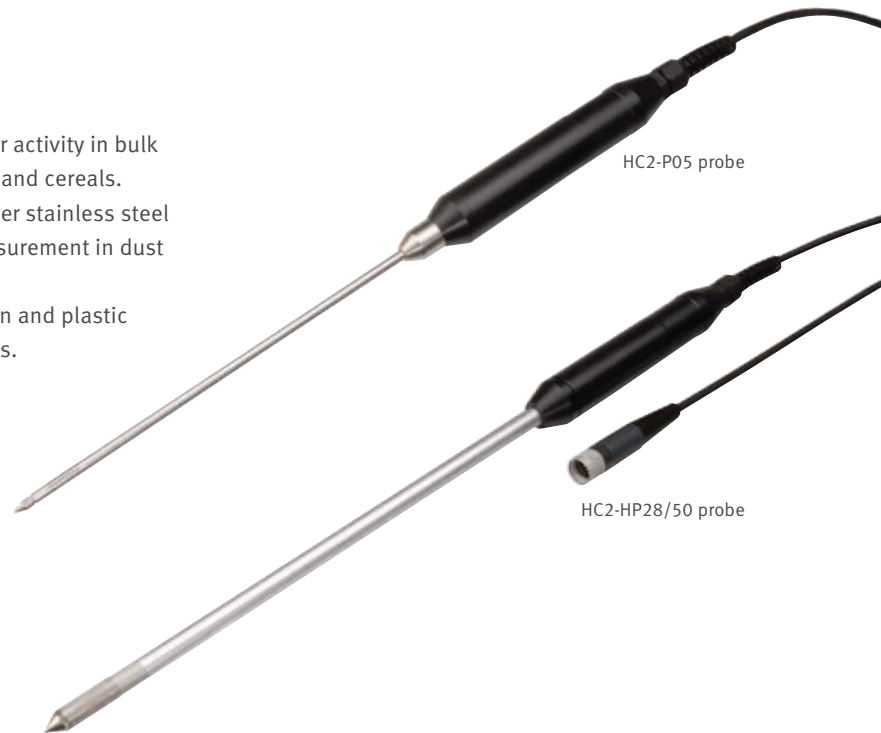
For direct measurement

The insertion probes are for direct measurement of water activity in bulk samples. Applications include powders, granules, grain and cereals. HC2-HP insertion probes feature a robust 10 mm diameter stainless steel probe with replaceable sintered steel dust filter for measurement in dust bulk material.

For dust free applications like tablets, gel capsules, grain and plastic granules the HC2-P05 fits perfectly with its laser cut slots.

Features

- 5 mm insertion probe for measurement in dust-free bulk materials
- 10 mm insertion probe for measurement in dusty bulk materials



HC2-P05 probe

HC2-HP28/50 probe

QUOTATIONS & PRICING

| Order code | HC2-P05 | HC2-HP28 | HC2-HP50 |
|----------------------------------|--|------------------------------------|---------------|
| Probe length | Ø 5 x 200 mm | Ø 10 x 280 mm | Ø 10 x 500 mm |
| For use with | HygroLab C1, HP23-AW-A | | |
| Accuracy at 23 °C ±5 K (73.4 °F) | ±0.015 Aw / 1.5 %RH / ±0.3 K | ±0.008 Aw / 0.8 %RH / ±0.1 K | |
| Temperature dependence | 0.001 K/K, 0.02 %rh/K | | |
| Sensor | HYGROMER® IN-1 / Pt-100, 1/3 DIN Class B | | |
| Long term stability | <1 %RH / year | | |
| Calculations | Dew or frost point | | |
| Power supply | 3.2...5 VDC, calibrated at 3.3 VDC, current: ~4.5 mA | | |
| Digital interface | UART to other ROTRONIC devices or PC (HW4) | | |
| Range of application | -40...85 °C (-40...185 °F) / 0...100 %RH | | |
| Filter type | No filter available | Sintered steel with 5 µm pore size | |
| Response time τ63 | <15 s | <20 s, with filter | |
| Measurement interval | 1 s | | |
| Start-up time | 1.5 s | | |
| IP protection | IP30 | IP50 | |
| CE / EMC conformity | 2007 / 108 / EG | | |
| FDA / GAMP | FDA CFR 21 part 11 / GAMP5 | | |
| Weight | 160 g | 200 g | 300 g |
| Material | Stainless steel DIN 1.4305 (probe), POM (handle) | | |



Station probe HC2-AW-USB

Multi station application

The new station probe HC2-AW-USB offers new possibilities. The USB probe can be directly connected to a PC running HW4-P-QUICK-Vx software enabling water activity measurement capability. The HC2-AW-USB is the perfect device for a multi station application, as multiple probes can be attached to a single PC.

USB station probes

USB probes can be ordered as single probe or as a set including the HW4 software with Aw Quick function. The set offers all possibilities to measure water activity.

Features

- Complete set of probe and HW4 including Aw Quick function available
- Measurement range:
0.00...1.00 Aw (0...100 %RH), -40...85 °C (-40...185 °F)
- USB interface for direct connection to a PC (HC2-AW-USB)

QUOTATIONS & PRICING

| Order code | HC2-AW-USB | HC2-AW-USB-SW |
|----------------------------------|--|---|
| Probe type | Measurement probe with USB interface | Measurement probe and software HW4-P-QUICK-Vx |
| Connection | Via USB to PC, 3 m cable | |
| For use with | Software HW4 | |
| Accuracy at 23 °C ±5 K (73.4 °F) | ±0.008 Aw / ±0.8 %RH / ±0.1 K | |
| Temperature dependence | 0.001 K/K, 0.0002 Aw/K | |
| Sensor | HYGROMER® WA-1 / Pt-100, 1/3 DIN Class B | |
| Calculations | Dew or frost point | |
| Long term stability | <1 %RH / year | |
| Power supply | Via USB interface | |
| Range of application | -40...85 °C (-40...185 °F) / 0...100 %RH | |
| Filter type | Wire mesh filter with 20...25 µm pore size | |
| Response time τ63 | <20 s | |
| Measurement interval | 1 s | |
| Start-up time | 1.5 s | |
| IP protection | IP20 | |
| CE / EMC conformity | EMC 2008/108/EG | |
| FDA / GAMP | FDA 21 CFR part 11 / GAMP5 | |
| Dimensions / Weight | Ø 68 x 60 mm / 600 g | |
| Material | Stainless steel, aluminum | |

Typical accessories

Sample holders: WP-14-S, WP-40, WP-40TH
 Disposable sample container: PS-14 (14 mm deep), PS-40 (40 mm deep)

Note: Order sample containers separately.
 Sample holders can also be used as calibration device.

Aw-Sets

The ROTRONIC Aw starter kits include everything needed for measurement and calibration. The portable units are supplied in a robust carry case.



Bench-top kit:

| Order code | HygroLab C1-SET-40 | |
|-------------|---|-------------|
| Set content | Bench top display device: Including: - Power adapter AC -> DC 12V - HW4 software with Aw-Quick | HygroLab C1 |
| | Measurement probe | HC2-AW |
| | USB-Cable for PC connection | AC0002 |
| | Sample holder: | WP-40 |
| | Disposable sample container (100 pc.) | PS-14 |
| | Disposable sample container (100 pc.) | PS-40 |
| | Humidity standards 0.5 %RH | EA00-SCS |
| | Humidity standards 10 %RH | EA10-SCS |
| | Humidity standards 35 %RH | EA35-SCS |
| | Humidity standards 50 %RH | EA50-SCS |
| | Humidity standards 80 %RH | EA80-SCS |



Handheld kit:

| Order code | HP23-AW-A-SET-14 with 14 mm sample holder | |
|-------------|---|-----------|
| Set content | Handheld instrument | HP23-AW-A |
| | Measurement probe | HC2-AW |
| | Sample holder | WP-14-S |
| | Disposable sample container (10 pc.) | PS-14 |
| | Humidity standards 10 %RH | EA10-SCS |
| | Humidity standards 35 %RH | EA35-SCS |
| | Humidity standards 50 %RH | EA50-SCS |
| | Humidity standards 80 %RH | EA80-SCS |
| | Carry case | AC1124 |

| Order code | HP23-AW-A-SET-40 with 40 mm sample holder | |
|-------------|---|-----------|
| Set content | Handheld instrument | HP23-AW-A |
| | Measurement probe | HC2-AW |
| | Sample holder | WP-40 |
| | Disposable sample container (10 pc.) | PS-40 |
| | Humidity standards 10 %RH | EA10-SCS |
| | Humidity standards 35 %RH | EA35-SCS |
| | Humidity standards 50 %RH | EA50-SCS |
| | Humidity standards 80 %RH | EA80-SCS |
| | Carry case | AC1124 |



Aw Accessories

Sample holders and sample containers



The sample holders provide excellent sample containment and optimum temperature stability. The WP-40TH can be attached to a water bath for additional temperature control.

The disposable sample containers ensure the optimum sample volume is introduced into the sample holders. They prevent the sample holders from coming into direct contact with the product being tested, thereby preventing soiling or cross contamination. The sample containers also provide a convenient means of collecting and storing samples.

Sample holders

| Order code | WP-14-S | WP-40 | WP-40TH |
|------------|---|---|---|
| |  |  |  |
| Type | Sample holder | | |
| Use with | PS-14 | PS-14 / PS-40 | PS-14 / PS-40 |
| Height | 14 mm | 40 mm | 40 mm |
| Material | V2A steel | | Brass, nickel-plated |
| Weight | 350 g | 1250 g | 1550 g |

Sample holders

| Order code | PS-14 | PS-40 |
|----------------|---|---|
| |  |  |
| Type | Sample container | |
| Use with | WP-14-S WP-40 / WP-40TH | WP-40 / WP-40TH |
| Height | 14 mm | 40 mm |
| Packaging unit | 100 pc. | |

Clamp sealing mechanism

In the case of very dry or very moist samples additional mechanical sealing of the Aw measurement probe and sample holder may be necessary to prevent external conditions influencing the sample.

| Order code | AW-KHS |
|------------|-----------------|
| Use with | WP-40 / WP-40TH |
| Weight | 1100 g |

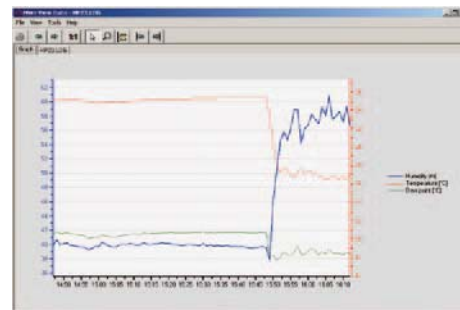


HW4 Software

Fully compatible

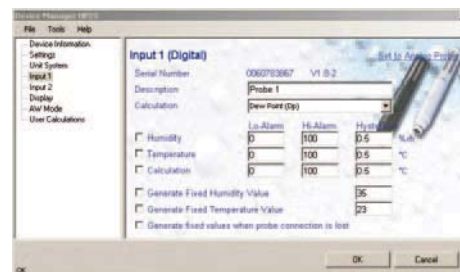
The HW4 software is compatible with all ROTRONIC products with USB, UART or Ethernet interface. The HW4 software is WINDOWS 7 compatible and runs on 64bit PC systems. It enables useful functions like:

- Live display of current measurements
- Recording of measurement data
- Instrument configuration
- Probe calibration
- Online calculation of any humidity or moisture parameter
- Alarms with notification can be sent via e-mail or SMS text
- Aw Quick function included (HW4-P-QUICK-Vx)



Viewing of measured values/monitoring

Viewing of measured values is very easy and user-friendly. Files of any device shown in the device tree can be copied and opened directly with the HW4 explorer. The data is presented in table or graph form. The graph module can be configured by the user.



Instrument configuration

HW4 software can be used to adjust the settings of ROTRONIC instruments and probes. The following functions and settings can be changed:

- General device settings
- Password protection of device settings
- Change of unit systems metric / english
- Aw mode settings

Humidity standards

On-site calibration and adjustment of ROTRONIC probes. With the humidity standards, a calibration device and HW4 software running on a PC this is easily achieved. It is also possible to calibrate and adjust probes with the HygroLab C1 or HP23-AW-A.

| Order code | Humidity value | Uncertainty at 23 °C (73.4 °F) |
|------------|----------------|--------------------------------|
| EA00-SCS | 0.5 %RH | ±0.3 %RH |
| EA05-SCS | 5 %RH | |
| EA10-SCS | 10 %RH | |
| EA20-SCS | 20 %RH | ±0.5 %RH |
| EA35-SCS | 35 %RH | |
| EA50-SCS | 50 %RH | |
| EA60-SCS | 60 %RH | ±0.9 %RH |
| EA75-SCS | 75 %RH | |
| EA80-SCS | 80 %RH | |
| EA95-SCS | 95 %RH | ±1.2 %RH |

